

PLAN OF SURVEY OF  
**LOT 'L'**  
**REGISTERED PLAN 1201**  
**CITY OF TORONTO**  
 MUNICIPALITY OF METROPOLITAN TORONTO  
 SCALE 1:150  
 YOUNG & YOUNG SURVEYING INC.  
 ONTARIO LAND SURVEYORS

**METRIC**

DIMENSIONS SHOWN ON THIS PLAN ARE IN METRES, AND  
 CAN BE CONVERTED TO FEET BY DIVIDING BY 0.3048.



I REQUIRE THIS PLAN TO BE  
 DEPOSITED UNDER THE REGISTRY  
 ACT

**PRELIMINARY**  
 DATE: DECEMBER 13, 1995  
 YOUNG & YOUNG, S.A., B.S.K.  
 ONTARIO LAND SURVEYOR

**PLAN 64R-**

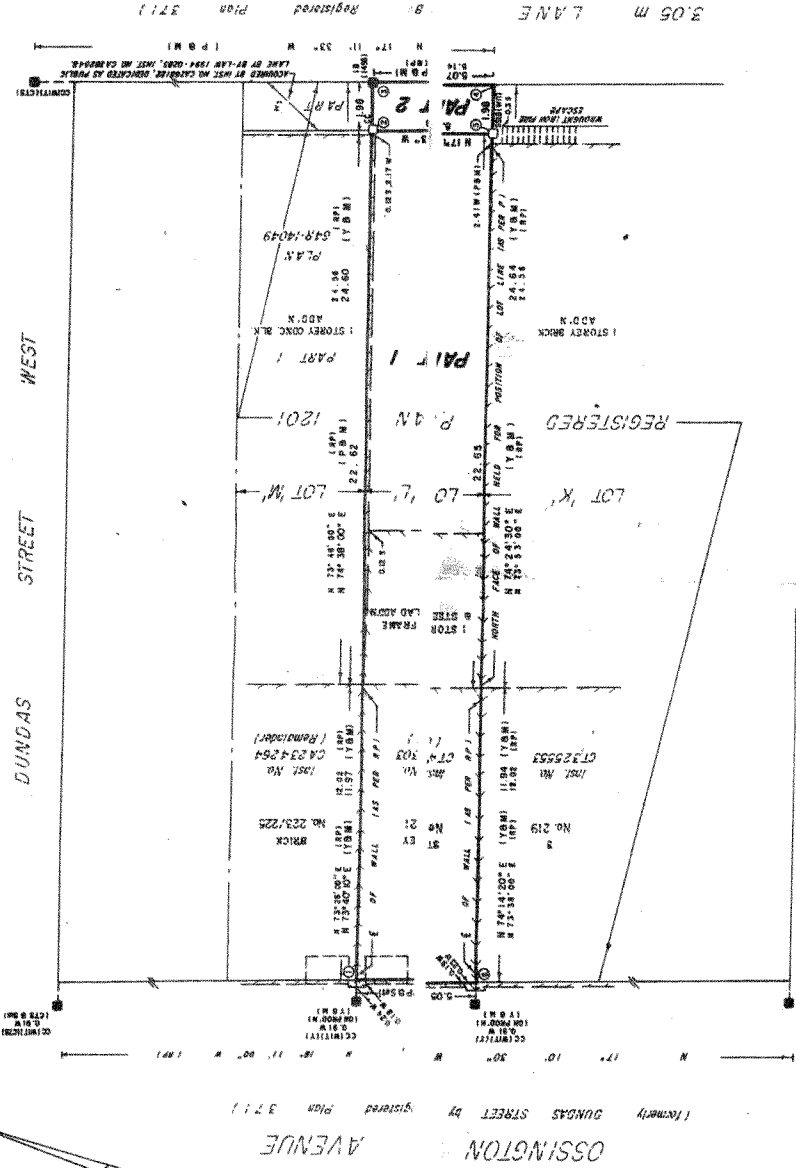
RECEIVED AND DEPOSITED

**PRELIMINARY**  
 DATE: \_\_\_\_\_  
 YOUNG & YOUNG, S.A., B.S.K.  
 ONTARIO LAND SURVEYOR  
 FOR THE REGISTERED PLAN  
 OF METROPOLITAN TORONTO (No. 641)

**CAUTION**  
 THIS PLAN IS NOT A PLAN OF SUBDIVISION WITHIN  
 THE MEANING OF THE PLANNING ACT.

**SCHEDULE**

PART	LOT	PLAN	INSTRUMENT NO.	AREA
1	L	1201	07401803 (10C1)	177.03 SQ. METRES
2				10.3 SQ. METRES



HALTON STREET

**CO - ORDINATE LISTING**

NUMBER	NORTHING	EASTING
1	4,824,133.80	311,200.59
2	4,824,133.80	311,200.59
3	4,824,133.80	311,200.59
4	4,824,133.80	311,200.59
5	4,824,133.80	311,200.59
6	4,824,133.80	311,200.59
7	4,824,133.80	311,200.59
8	4,824,133.80	311,200.59
9	4,824,133.80	311,200.59
10	4,824,133.80	311,200.59
11	4,824,133.80	311,200.59
12	4,824,133.80	311,200.59
13	4,824,133.80	311,200.59
14	4,824,133.80	311,200.59
15	4,824,133.80	311,200.59
16	4,824,133.80	311,200.59
17	4,824,133.80	311,200.59
18	4,824,133.80	311,200.59
19	4,824,133.80	311,200.59
20	4,824,133.80	311,200.59
21	4,824,133.80	311,200.59
22	4,824,133.80	311,200.59
23	4,824,133.80	311,200.59
24	4,824,133.80	311,200.59
25	4,824,133.80	311,200.59
26	4,824,133.80	311,200.59
27	4,824,133.80	311,200.59
28	4,824,133.80	311,200.59
29	4,824,133.80	311,200.59
30	4,824,133.80	311,200.59
31	4,824,133.80	311,200.59
32	4,824,133.80	311,200.59
33	4,824,133.80	311,200.59
34	4,824,133.80	311,200.59
35	4,824,133.80	311,200.59
36	4,824,133.80	311,200.59
37	4,824,133.80	311,200.59
38	4,824,133.80	311,200.59
39	4,824,133.80	311,200.59
40	4,824,133.80	311,200.59
41	4,824,133.80	311,200.59
42	4,824,133.80	311,200.59
43	4,824,133.80	311,200.59
44	4,824,133.80	311,200.59
45	4,824,133.80	311,200.59
46	4,824,133.80	311,200.59
47	4,824,133.80	311,200.59
48	4,824,133.80	311,200.59
49	4,824,133.80	311,200.59
50	4,824,133.80	311,200.59
51	4,824,133.80	311,200.59
52	4,824,133.80	311,200.59
53	4,824,133.80	311,200.59
54	4,824,133.80	311,200.59
55	4,824,133.80	311,200.59
56	4,824,133.80	311,200.59
57	4,824,133.80	311,200.59
58	4,824,133.80	311,200.59
59	4,824,133.80	311,200.59
60	4,824,133.80	311,200.59
61	4,824,133.80	311,200.59
62	4,824,133.80	311,200.59
63	4,824,133.80	311,200.59
64	4,824,133.80	311,200.59
65	4,824,133.80	311,200.59
66	4,824,133.80	311,200.59
67	4,824,133.80	311,200.59
68	4,824,133.80	311,200.59
69	4,824,133.80	311,200.59
70	4,824,133.80	311,200.59
71	4,824,133.80	311,200.59
72	4,824,133.80	311,200.59
73	4,824,133.80	311,200.59
74	4,824,133.80	311,200.59
75	4,824,133.80	311,200.59
76	4,824,133.80	311,200.59
77	4,824,133.80	311,200.59
78	4,824,133.80	311,200.59
79	4,824,133.80	311,200.59
80	4,824,133.80	311,200.59
81	4,824,133.80	311,200.59
82	4,824,133.80	311,200.59
83	4,824,133.80	311,200.59
84	4,824,133.80	311,200.59
85	4,824,133.80	311,200.59
86	4,824,133.80	311,200.59
87	4,824,133.80	311,200.59
88	4,824,133.80	311,200.59
89	4,824,133.80	311,200.59
90	4,824,133.80	311,200.59
91	4,824,133.80	311,200.59
92	4,824,133.80	311,200.59
93	4,824,133.80	311,200.59
94	4,824,133.80	311,200.59
95	4,824,133.80	311,200.59
96	4,824,133.80	311,200.59
97	4,824,133.80	311,200.59
98	4,824,133.80	311,200.59
99	4,824,133.80	311,200.59
100	4,824,133.80	311,200.59

**SURVEYOR'S CERTIFICATE**

I CERTIFY THAT:  
 1. THIS SURVEY AND PLAN ARE CORRECT AND IN ACCORDANCE  
 WITH THE SURVEY ACT AND THE REGISTRY ACT AND  
 THE REGULATIONS MADE THEREUNDER.  
 2. THIS SURVEY WAS COMPLETED ON THE DAY OF  
 DECEMBER, 1995.

DECEMBER 13, 1995  
 DATE

**LEGEND**

- DENOTES SURVEY MONUMENT SET
- SURVEY MONUMENT FOUND
- RP REGISTERED PLAN 1201
- MEASURED
- WT
- ASEW
- IB NORTH, SOUTH, EAST, WEST
- STANDARD IRON BAR
- IRON BAR
- SHORT STANDARD IRON BAR
- CITY OF TORONTO SURVEY
- SSB SHORT STANDARD IRON BAR
- CTS
- P

**BEARING NOTE**

BEARINGS HEREON ARE GRID BEARINGS, AND ARE DERIVED FROM HORIZONTAL  
 CONTROL MONUMENTS NO'S 46-CT AND 277-CT AND ARE REFERRED TO CENTRAL  
 MERIDIAN 79° 30' WEST LONGITUDE, ZONE 10.

**YOUNG & YOUNG SURVEYING INC.**  
 PROFESSIONAL LAND SURVEYORS


TORONTO  
 4174 DUNDAS STREET W., SUITE 200  
 TORONTO, ONTARIO M6K 3G3  
 R. R. 1, 14903 9TH. LINE  
 BOLTON, ONTARIO L7E 3P7  
 DRAWN BY: M.M. / CHECKED BY: M.M. / DATE: 1995

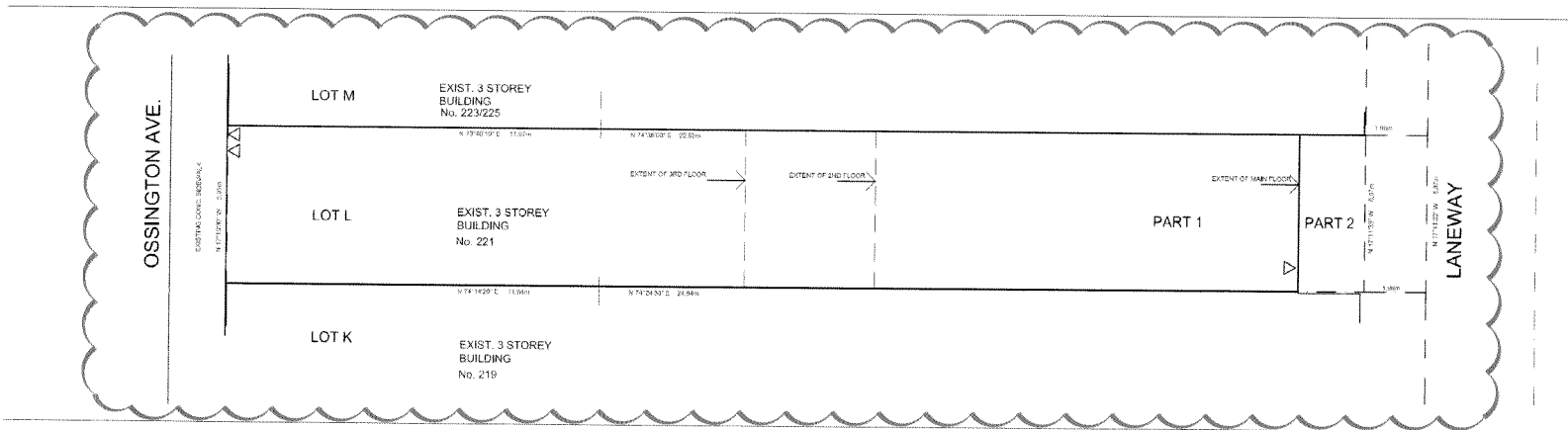
**PROJECT 90-T 2549-2**

**MINOR VARIANCE SKETCH**

221 Ossington Avenue,  
Toronto, ON

**LEGEND**

 Subject to Minor Variance to reduce the required number of parking from 1 space to 0 spaces



RECEIVED  
MAY 05 2015  
COMMITTEE OF  
ADJUSTMENT

DATE: December 9, 2014

SCALE: 1 : 150



N:\1485\F2014\December\Minor Variance Sketch\005 - Minor Variance Sketch.dwg

**MHBC** PLANNING  
URBAN DESIGN  
& LANDSCAPE  
ARCHITECTURE  
230 TESSINGTON ROAD MISSISSAUGA, ON L4R 1E7  
TEL: 905.271.1100 FAX: 905.271.3000 WWW.MHBCPLAN.COM

model # **A1.1**  
 date: JULY 2014  
 R.F.  
 project #: 13860

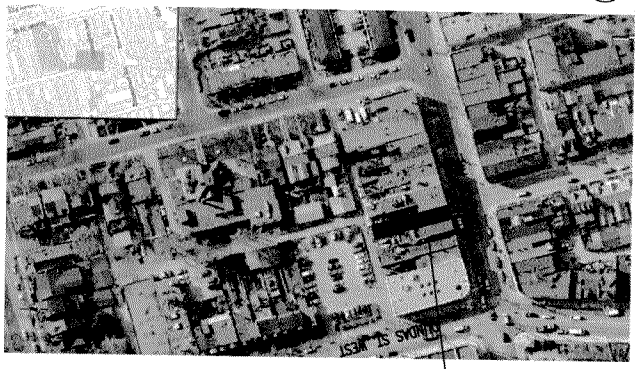
project:  
 INTERIOR ALTERATION AT:  
**PIZZERIA LIBRETTO**  
 221 OSSINGTON AVE.  
 TORONTO, ONT.

7  
6  
5  
4  
3  
2  
1  
 ISSUED FOR COA  
 ISSUED FOR BPA  
 8 DEC 14  
 28/07/14  
 FLOOR PLAN  
 scale: 1:50

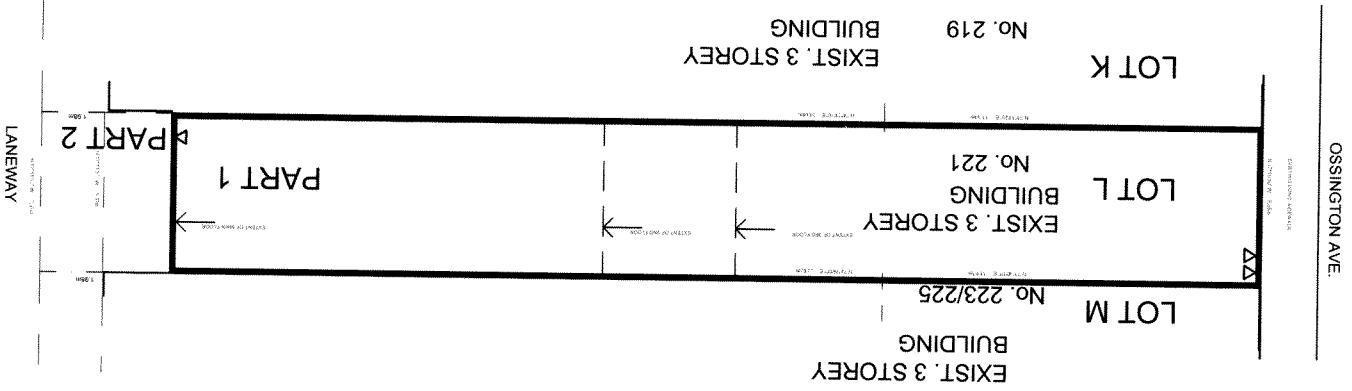
ALL DRAWINGS ARE THE PROPERTY OF VANBETHEM ARCHITECT INC. THE ARCHITECT AND MUST BE RETURNED UPON REQUEST.  
 >CONTRACTOR SHALL CHECK ALL DIMENSIONS AND REPORT ANY DISCREPANCIES TO THE ARCHITECT BEFORE PROCEEDING WITH THE WORK.  
 VANBETHEM ARCHITECT INC.  
 1700 SPENS RD, UNIT 16  
 DAVENLE, ONTARIO, L4L 2X4  
 T: 905.582.0630 F: 905.582.2619  
 08.12.2014  
 LICENCE 5424  
 FRANK WILLIAM VANBETHEM  
 ARCHITECTS  
 OF  
 ONTARIO ASSOCIATION

EXISTING BUILDING SUMMARY		ZONING	
SITE AREA	187.10 SM	569-2013 [CR 2.5 (C2.0+1.5) S52 (X1.782)]	
BUILDING AREA	173.91		
FLOOR AREA			
GROUND	173.91		
2ND	105.17		
3RD	83.80		
TOTAL	362.88		
BSMNT	52.68		
FSI	1.94		
COVERAGE	92.95%		
EXISTING OCCUPANCY			
GROUND FLOOR	E2 (30 SEATS)		
2ND FLOOR	D - EXIST. OFFICE		
THIRD FLOOR	D - EXIST. OFFICE		
BASEMENT	4 UNISEX WASHROOMS		
2ND FLOOR	4 UNISEX STAFF WASHROOM		
3RD FLOOR	1 UNISEX STAFF WASHROOM		
AREA OF WORK	45.36 SM		

RECEIVED  
 MAY 05 2015  
 COMMITTEE OF  
 ADJUSTMENT



FIRE SAFETY LEGEND	
	EXISTING EXIT SIGN
	EXISTING EMERGENCY LIGHT
	EXISTING FIRE PULL STATION
	NEW SPRINKLER HEAD

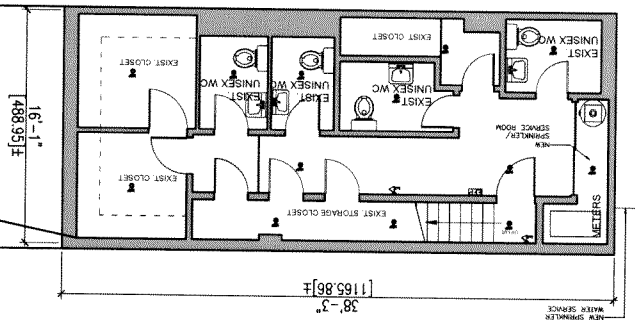


2 SITE KEY PLAN  
 NTS

1 SITE REFERENCE PLAN  
 1:150

**RECEIVED**  
 MAY 05 2015  
 COMMITTEE OF  
 ADJUSTMENT

1:100  
**1**  
**BASEMENT FLOOR PLAN**



1
2
3
4
5
6
7
8

1 ISSUED FOR RPA 28.07.14  
 2 ISSUED FOR COA DEC 8.2014  
 3  
 4  
 5  
 6  
 7  
 8

**BASEMENT FLOOR PLAN**  
 scale: 1:100

project:  
 INTERIOR ALTERATION AT:

**PIZZERIA LIBRETTO**  
 221 OSSINGTON AVE.  
 TORONTO, ONT.

**A1.0**

sheet #:  
 date:  
 project #:  
 13860

08.12.2014  
 5424  
 LICENCE  
 FRANK WILLIAM VANBELLEHEM  
 ARCHITECTS  
 OF  
 ONTARIO ASSOCIATION

>ALL DRAWINGS ARE THE PROPERTY OF  
 THE ARCHITECT AND MUST BE RETURNED  
 UPON REQUEST  
 >CONTRACTOR SHALL CHECK ALL  
 DIMENSIONS AND REPORT ANY  
 DISCREPANCIES TO THE ARCHITECT  
 BEFORE PROCEEDING WITH THE WORK.

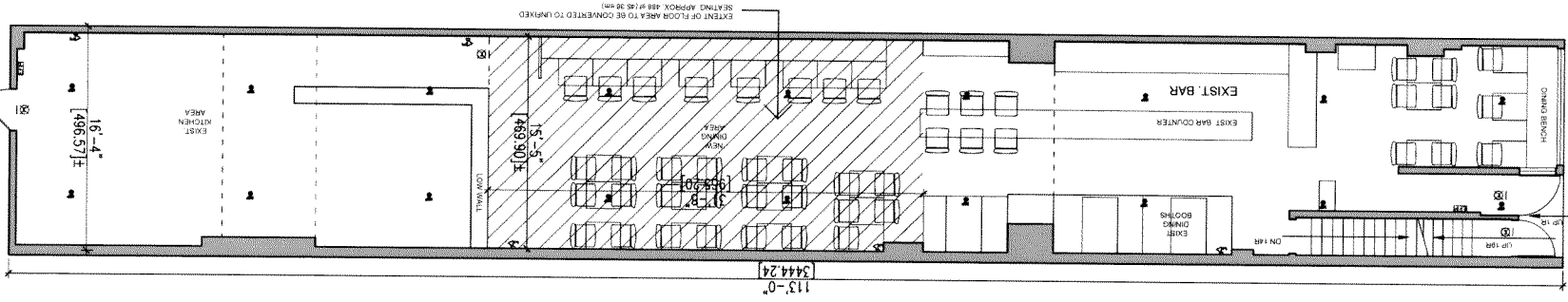
**VANBELLEHEM**  
 ARCHITECT INC.  
 1200 SPERS RD, UNIT 16  
 GANVILLE, ONTARIO, L6L 2X4  
 T. 905.582.0630 F. 905.582.2619

**RECEIVED**  
 MAY 05 2015  
 COMMITTEE OF  
 ADJUSTMENT

1:100

GROUND FLOOR PLAN

EXIST 3 STOREY



sheet #

A1.1

project:

INTERIOR ALTERATION AT:  
**PIZZERIA LIBRETTO**  
 221 OSSINGTON AVE.  
 TORONTO, ONT.

date: JUL 2014  
 R.F.  
 project #: 1380

7  
6  
5  
4  
3  
2  
1

ISSUED FOR COA  
 DEC 8 2014  
 2882.14

GROUND  
 FLOOR PLAN

scale: 1/100

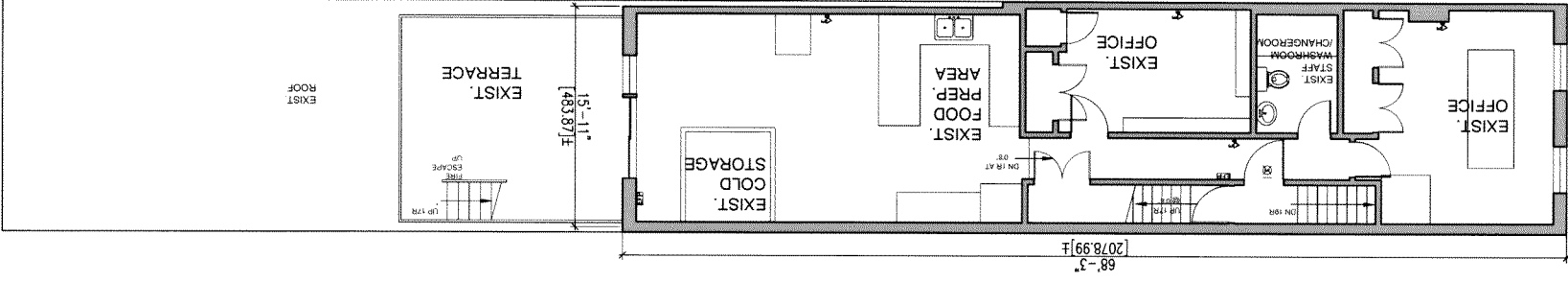
08 12 2014  
 LICENCE  
 5424  
 FRANK WILLIAM VANBETHEM  
 ARCHITECTS  
 OF  
 ONTARIO ASSOCIATION

> ALL DRAWINGS ARE THE PROPERTY OF THE ARCHITECT AND MUST BE RETURNED UPON REQUEST.  
 > CONTRACTOR SHALL CHECK ALL DIMENSIONS AND REPORT ANY DISCREPANCIES TO THE ARCHITECT BEFORE PROCEEDING WITH THE WORK.

VANBETHEM ARCHITECT INC.  
 1200 SPEERS RD. UNIT 14  
 DANFORTH, ONTARIO, CAN. M1A  
 7 905 582 0610 905 582 2619

**RECEIVED**  
MAY 05 2015  
COMMITTEE OF  
ADJUSTMENT

1 SECOND FLOOR PLAN 1:100



Sheet #

A1.2

Project

INTERIOR ALTERATION AT:  
PIZZERIA LIBRETTO  
221 OSSINGTON AVE.  
TORONTO, ONT.

Project # 13860  
Date: JULY 2014  
R.F.

1

2

3

4

5

6

7

SECOND FLOOR PLAN  
Scale: 1:100

drawing:  
1. ISSUED FOR BFA 28.07.14  
2. ISSUED FOR COA DEC 8.2014

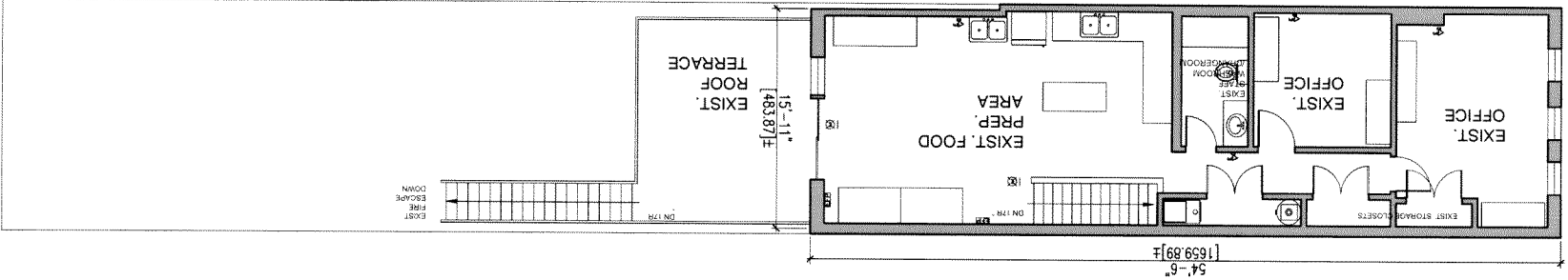
08 12 2014  
5424  
LICENCE  
FRANK WILLIAM VANBELLEHEM  
ARCHITECTS  
OF  
ONTARIO ASSOCIATION

> ALL DRAWINGS ARE THE PROPERTY OF THE ARCHITECT AND MUST BE RETURNED UPON REQUEST.  
> CONTRACTOR SHALL CHECK ALL DIMENSIONS AND REPORT ANY DISCREPANCIES TO THE ARCHITECT BEFORE PROCEEDING WITH THE WORK.

VANBELLEHEM ARCHITECT INC.  
1300 SPEERS RD, UNIT 15  
OAKVILLE, ONTARIO, L6L 2X4  
T. 905.582.0630 F. 905.582.2619

RECEIVED  
MAY 05 2015  
COMMITTEE OF  
ADJUSTMENT

1  
1:100  
THIRD FLOOR PLAN



project:

INTERIOR ALTERATION AT:  
PIZZERIA LIBRETTO  
221 OSSINGTON AVE.  
TORONTO, ONT.

A1.3

sheet #  
date: JULY 2014  
designed by: B.F.  
project #: 13840

7		
6		
5		
4		
3	ISSUED FOR COA	DEC 9 2014
2	ISSUED FOR BPA	28.07.14
1	drawing	

scale:

1:100

THIRD  
FLOOR PLAN

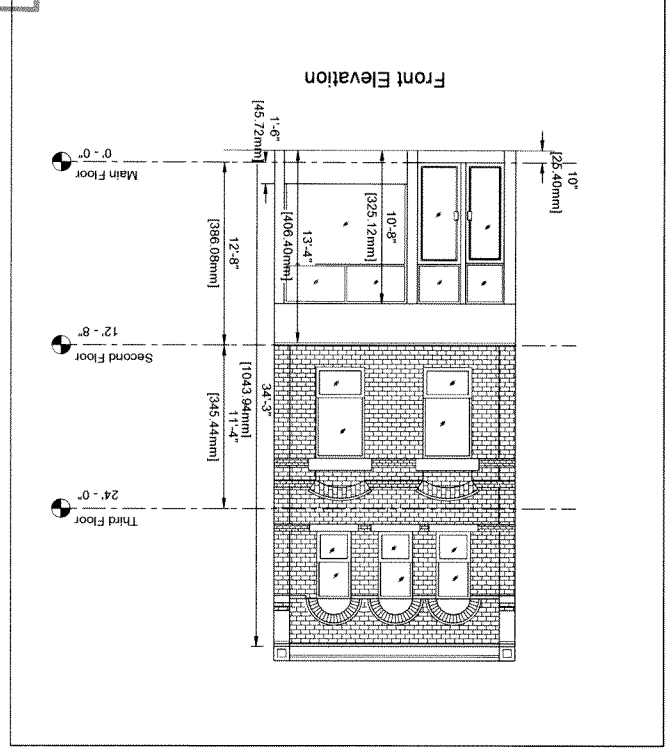
FRANK WILLIAM VANBETLEHEM  
LICENCE  
5424  
08.12.2014  
ONTARIO ASSOCIATION  
OF ARCHITECTS

ALL DRAWINGS ARE THE PROPERTY OF THE ARCHITECT AND MUST BE RETURNED UPON REQUEST.  
> CONTRACTOR SHALL CHECK ALL DIMENSIONS AND REPORT ANY DISCREPANCIES TO THE ARCHITECT BEFORE PROCEEDING WITH THE WORK.

VANBETLEHEM ARCHITECT INC.  
1200 SHEPPARD AVE. UNIT 18  
DANFORTH, ONTARIO, L4L 2T4  
TEL: 905.503.2419 F: 905.583.0498

**RECEIVED**  
 MAY 05 2015  
 COMMITTEE OF  
 ADJUSTMENT

1  
 1:100  
 EXIST. ELEVATIONS



sheet #  
**A2.1**

date: JULY 2014  
 project #: 13860

project:  
 INTERIOR ALTERATION AT:  
**PIZZERIA LIBRETTO**  
 221 OSSINGTON AVE.  
 TORONTO, ONT.

7		
6		
5		
4		
3	ISSUED FOR COA	8 DEC 14
2	ISSUED FOR BFA	24 OCT 14
1		

drawings:  
 EXISTING  
 ELEVATIONS

08.12.2014  
 5424  
 LICENCE  
 FRANK WILLIAM VANBELTHEM  
 ARCHITECTS  
 OF  
 ONTARIO ASSOCIATION

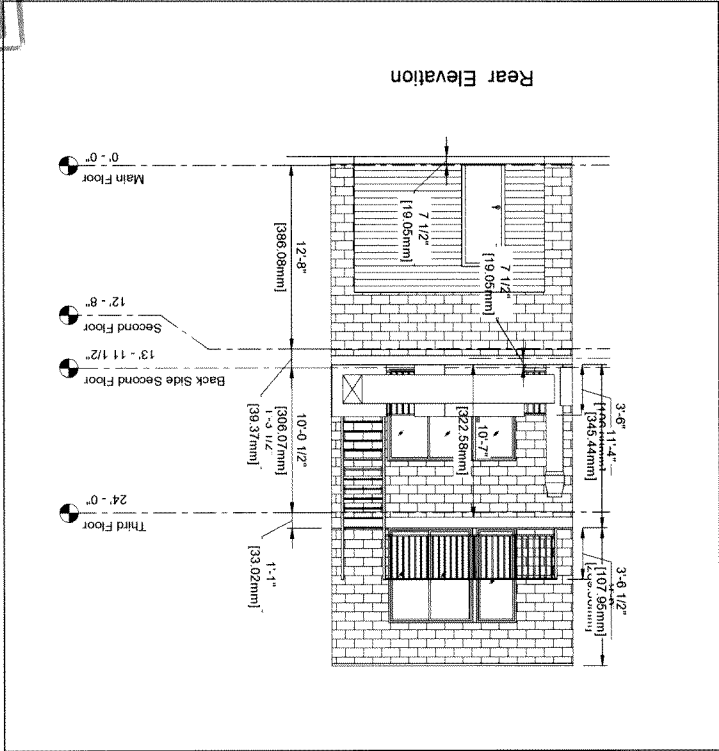
ALL DRAWINGS ARE THE PROPERTY OF THE ARCHITECT AND MUST BE RETURNED UPON REQUEST.  
 CONTRACTOR SHALL CHECK ALL DIMENSIONS AND REPORT ANY DISCREPANCIES TO THE ARCHITECT BEFORE PROCEEDING WITH THE WORK.

VANBELTHEM ARCHITECT INC.  
 1200 SPENCER RD., UNIT 15  
 OAKVILLE, ONTARIO, L6L 2M4  
 T. 905.582.0630 F. 905.582.2619



**RECEIVED**  
 MAY 05 2015  
 COMMITTEE OF  
 ADJUSTMENT

1  
 1:100  
 EXIST. ELEVATIONS



sheet #  
**A2.2**

project:  
 INTERIOR ALTERATION AT:  
**PIZZERIA LIBRETTO**  
 221 OSSINGTON AVE.  
 TORONTO, ONT.

2	
6	
6	
4	
3	
2	ISSUED FOR COA
1	ISSUED FOR BFA
	8 DEC 14
	24 OCT 14

drawings:  
 EXISTING  
 ELEVATIONS  
 scale: NTS

08.12.2014  
 5424  
 LICENCE  
 FRANK WILLIAM VANBELHEM  
 ARCHITECTS  
 OF  
 ONTARIO ASSOCIATION

>ALL DRAWINGS ARE THE PROPERTY OF THE ARCHITECT AND MUST BE RETURNED UPON REQUEST.  
 \*CONTRACTOR SHALL CHECK ALL DIMENSIONS AND REPORT ANY DISCREPANCIES TO THE ARCHITECT BEFORE PROCEEDING WITH THE WORK.

**VANBELHEM**  
 ARCHITECT INC.  
 1700 SPERS RD, UNIT 10  
 OAKVILLE, ONTARIO, L6L 2Y4  
 T. 905.582.0630 / F. 905.582.2619